



Higher Education



WE PROTECT LIVES & ASSETS ON CAMPUS, THROUGH TECHNOLOGY

Who We Are

The FS Group has been led by the mission of protecting people and assets for **50 years**.

The trust and loyalty that our clients have shown us over the last 50 years has enabled us to excel. **Since the 1990's we have serviced clients in the Higher Education vertical** and by working closely with them, we have been able to become experts in their industry and better guide them in end-to-end solutions as their organizations grow.



FIRE PROTECTION ASSOCIATION
OF SOUTHERN AFRICA





UNIVERSITY of the
WESTERN CAPE



UNIVERSITEIT
STELLENBOSCH
UNIVERSITY



UNIVERSITY
OF
JOHANNESBURG

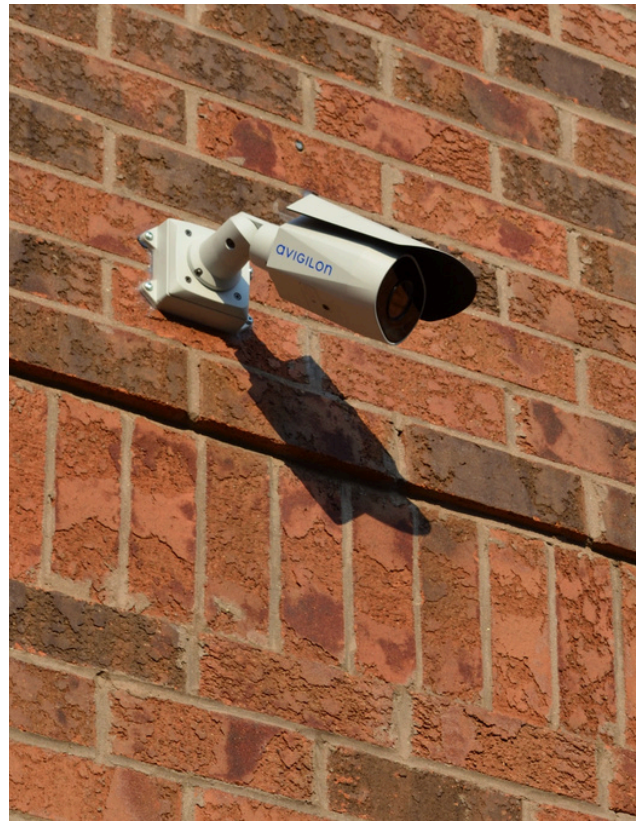


University Footprint

Our longstanding University portfolio includes:

- HD Video Surveillance
- Enterprise Access Control Systems
- Fire Protection & Life Safety
- 4IR, IoT & Cloud Solutions
- Integrated Security Management Systems
- Predictive Maintenance

The promise to deliver a secure and effective learning environment is only possible when it is built on a foundation of safety.



Keeping Universities safe through integrated security technology that is designed to ensure student and faculty safety ranging from initial detection to final response across your campus.

How do we know who is coming to our University?

- Easily manage contractors on site
- Control student access and link it to enrollment
- Manage and observe parking lots
- Monitor large areas in one view
- Recognize and fill security gaps

How do we keep an eye on thousands of students?

- Automatically detect unusual motion
- Highlight unusual behavior or activity
- Recognize slips and falls
- Intelligently investigate events

How do we stay connected and keep people informed?

- Coordinate with local first responders
- Collaborate across campuses
- Share information across teams
- Alert multiple teams simultaneously
- Send mass notifications to inform students

How can we provide eyes-on-scene from anywhere?

- Aggregated information feeds
- Unify data/evidence storage
- Directly share data with first responders
- Log incident reports





Detect.

Managing your grounds can be a challenge. From overseeing building entries, controlling student and visitor activity, and monitoring access, detection plays a critical role in minimizing potential threats. Integrated video security monitors and identifies unusual activity and potential intruders across campus. Automatic license plate recognition analyzes vehicles entering and exiting campus – detecting and reporting suspicious vehicles on university property. Building entry management provides access control, automates lockdowns and pushes notifications of potential entry breaches to your response team's radios. All of this comes together to improve your situational awareness and help increase early risk detection.

Communicate.

Whether it's a routine fire drill, a sudden food fight in the restaurant or an emergency situation, clear and timely communication is key to creating a connected and protected campus. Communications – including radios and LTE devices – instantly and reliably connect your security, administration, and staff. Radio alerts ensure key personnel are informed of critical alerts. Mass notification enables you to send critical information to faculty, staff and students, quickly and easily, keeping the community aware of campus activity. Connectivity – both on and off campus – is an important part of creating a safe and collaborative educational environment where you and your team are always aware.

Analyse.

Every day, you're responsible for monitoring a large campus to maintain the safety of hundreds of students. Searching through the collected data to recognize concerning behaviours on and around campus is a demanding task. Video analytics detect potentially suspicious activity on your property, providing real time insights into campus movements. Appearance searches quickly and seamlessly explore video footage and locate students and visitors' physical descriptions, allowing easy identification. Unusual motion detection reveals atypical events which need investigating. Ultimately, these insights enable proactive monitoring and management across campus – enabling you to respond to suspicious behaviour before an incident occurs.

Respond.

Whether it's an everyday situation or an emergency, being ready and aware can make a critical difference. Having a comprehensive communications and action plan that can be seamlessly activated ensures your personnel are able to respond calmly and effectively with minimal disruptions to the learning environment. Emergency connectivity ensures instant access to your local law enforcement agency for immediate notification and effective engagement of emergency response teams. Real-time intelligence shares alerts and live video feeds with campus personnel and public safety, enabling a coordinated and informed response and providing eyes on the scene for your staff and local responders.



MARCH 2020 | SUCCESS STORY

A Leading University Scouts a Smart Security Solution

Marian University

Industry: Education

Location: Indianapolis, Indiana, USA



Solutions Implemented

Avigilon Control Center (ACC) Software

Allows quick and easy review of live or recorded video with a simplified screen layout, intuitive controls and self-learning video analytics. Also features Avigilon Appearance Search[™] technology to help you quickly find a person or vehicle of interest.

Avigilon Appearance Search[™] Technology

Allows you to locate persons of interest quickly and easily using certain physical descriptions such as gender and clothing color.

Unusual Motion Detection (UMD) Technology

Uses advanced AI to reveal events that could otherwise go unnoticed. UMD technology continuously learns what typical activity in a scene looks like and flags unusual motion.

H5A Camera Line

Features next-generation video analytics technology to help focus your attention on potentially critical events.

H5SL Camera Line

A versatile and cost-effective security solution that is backed by an industry-leading warranty.

Marian University is a school with a mission. Having transitioned from a liberal arts college to a comprehensive university in 2009, it has become one of the leading private education institutions in Indiana. And that's not all: the university has ambitious goals to grow its programs and broaden its mandate even further. Currently, the school has over 500 staff members and more than 3,500 students from across the United States and around the world. And by 2025, it aims to double its number of annual graduates.

Located just ten minutes away from downtown Indianapolis, Marian University's close proximity to a major center of American business, finance and culture is a major selling point. The city is also experiencing an influx of technology companies, making it the fifth-fastest growing municipality in the country for high-tech jobs. However, as in many booming regions, economic success isn't evenly distributed.

While some areas have experienced revitalization, others have seen social unrest and rising crime rates. As such, while Marian University's campus has the privilege of sitting near a bustling city, these challenges aren't far away. That fact — along with the increasing number of staff and students on the premises — motivated the university to upgrade their security systems to help keep both its people and the wider community safe.

A Solution That Can Learn and Grow

Marian University's previous security system wasn't up to the task of monitoring the premises, staff and students — so how would it manage increased traffic and additional properties as the school met its growth targets? The ongoing maintenance and licensing costs were also prohibitive. Administrators were at a loss of what to do until the security integrator they were working with suggested Avigilon. With high-definition cameras and built-in analytics that seamlessly integrated with Avigilon Control Center (ACC) video management software, it offered a comprehensive, intelligent and scalable solution. Additionally, the licensing fee was a one-time cost, saving the school both time and money.

As the security team at Marian University found out, ACC[™] software is much more than a centralized source from which to review recorded video. Not only can security operators analyze the video by zooming in and rewinding in real-time, but Avigilon Appearance Search[™] technology leverages AI technology to help them instantly locate specific individuals and vehicles of interest.

Images of product features/interface have been simulated for illustrative purposes.

CONTINUED



Furthermore, [Unusual Motion Detection \(UMD\)](#) technology uses advanced video analytics to flag events that may require further investigation and filter them in the recorded video timeline, allowing security operators to find and review these instances faster. All of this was made possible with the installation of intelligent [Avigilon cameras](#) and [network video recorders \(NVR\)](#) across the campus.

“The organization is tremendous to work with,” says **Ray Stanley, CIO/Vice President of Marian University**. “I have never worked with a security company where I’ve been able to pick up the phone and have someone to help solve issues and make sure we are using the product the right way so that we see good value for our money. This was true not just in the beginning, their support exists right to this day.”

Protecting the Campus and Community

A Crash Course in Security

Instead of sending Marian University setup instructions and leaving the security and IT teams to figure it out for themselves, Avigilon coordinates with local third-party integrators to make sure the system is functioning and actively helps operators learn how to utilize it to its full potential. Personnel will come onsite to work with staff and guarantee they know how to get the most from their various video analytics platforms and solutions.

Neighborhood Watch

The main buildings at Marian University may be surrounded by quiet woodlands and wetlands, but the campus isn’t as isolated as it appears. Being a mere ten minutes away from the middle of Indianapolis, the school’s property borders several roadways, businesses and residential neighborhoods that all benefit from having an intelligent security system in the vicinity.

“The great quality video has helped keep the community safe, without a doubt,” says **Ray Stanley, CIO/Vice President of Marian University**. “In one case, local police were able to identify a suspect involved in an incident at a nearby gas station because of our Avigilon system. Being able to help our surrounding community stay safe is absolutely an added benefit for us.”

Better Safe Than Sorry

With its Avigilon solution, the Marian University campus has become an extra set of eyes for law enforcement. UMD and Avigilon Appearance Search technologies mean that criminals who make the mistake of moving across campus have a much higher chance of being detected by the authorities who can then quickly track their route to see where they have been and where they are headed. With its user-friendly interface and high-quality video, the security installation not only helps with police work and prosecution, but it enables security personnel to spot and deter any potentially-dangerous behavior on a daily basis, creating a safer environment for students and staff.

CONTINUED •

"For example, we were able to see a suspect driving at a high rate of speed across campus, and with Appearance Search, we were able to see where the vehicle went and identify the suspect," says **Chief Richard Robertson, Marian University Police Department**. "That helped us to save a lot of trouble and potential injuries."

Good for Students, Good for Society

In the United States, Indianapolis looms large not only as the crossroads of the country — two-thirds of Americans can drive to the city in ten hours or less — but also as a hub of innovation and investment. However, safety continues to be a top-of-mind issue as crime increases in certain sections of the city.

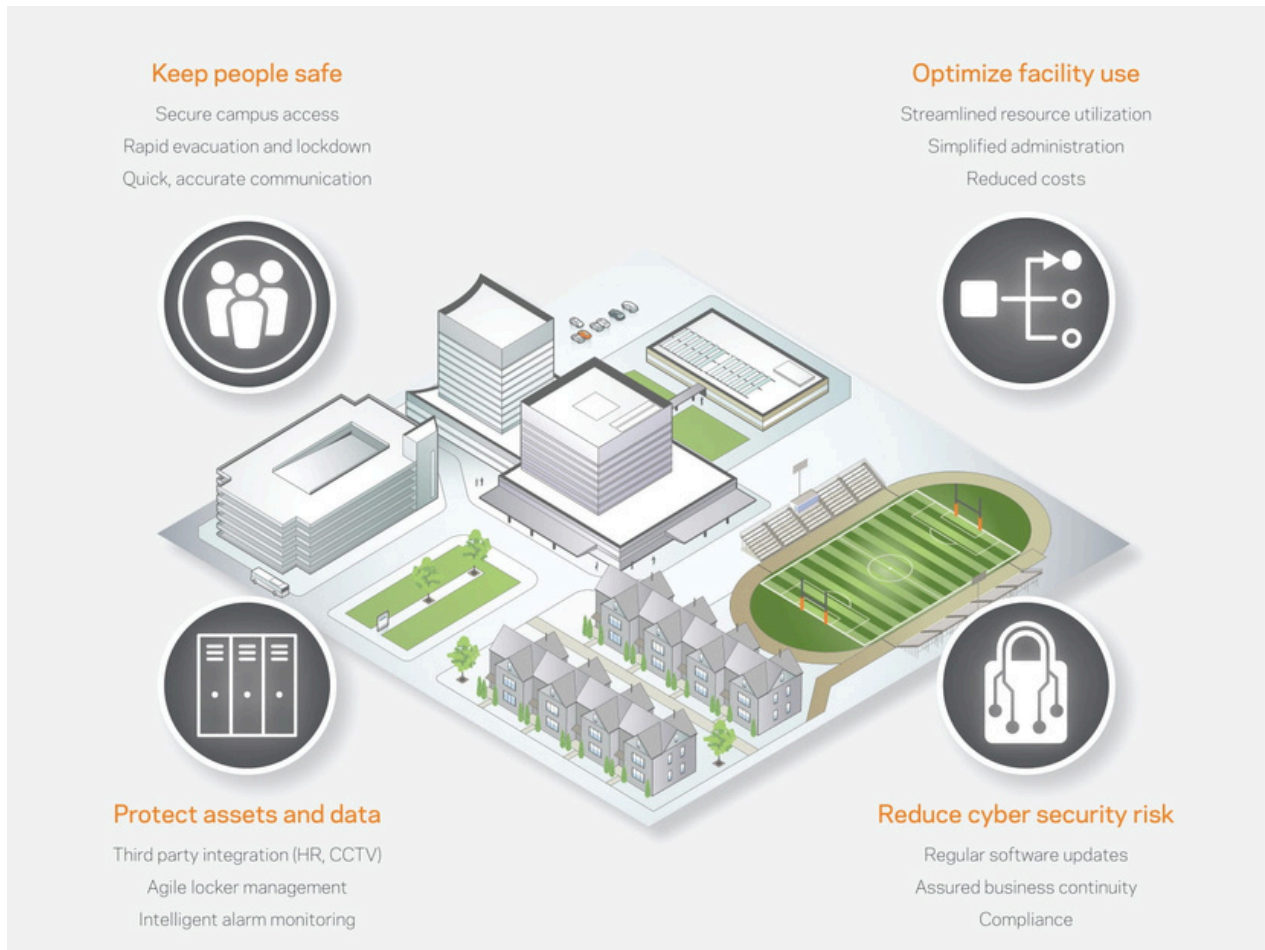


This is why Marian University chose Avigilon: as the school aims to provide a safe space for students and prepare them for the many opportunities Indianapolis has to offer, there's also a deep-seated obligation to help protect local communities and public spaces. Avigilon allows it to do both — and even better, the solution will be able to scale with the university as it evolves and expands in the years ahead. ■



"Avigilon delivers the best search and playback functionality I have ever seen and the software could not be easier to use,"
Assistant Director: Infrastructure and Support, Western Cape College of Nursing Services

Keeping students, staff, and visitors safe is essential to create an effective learning environment.



Gallagher's industry leading integrated security solutions provide complete campus control from one central management platform and deliver a seamless experience for your entire learning community.



Keep People Safe.

- **Rapid Evacuation and Lockdown** – Gallagher Command Centre helps you respond swiftly and accurately during emergency situations such as fire, natural disaster, terrorism or active shooter events.
- **Secure Campus Access** – Ensure people only have access to areas they are qualified to be in, and effectively manage compliance with your organizational policies and government regulations.
- **Student Accommodation** – Your duty of care is to keep students safe and supported in student accommodation buildings. With intelligent, integrated access control and visitor management solutions you can monitor student access to residential areas, including their last door access. Manage visitors in residential areas to enforce visiting hours and protocols. Track visitor arrival and departure, and generate notifications about visitors who are overdue leaving.
- **Visitor Management** – Control access using the Gallagher Visitor Management interface to create an open yet secure environment that keeps visitors on campus safe.

Reduce Cyber Security Risk.

- **Threat Management** – Gallagher's continually evolving software technology and cyber security counter measures are designed with built-in security to mitigate the risk of cyber-attack and protect your data.

Protect Assets and Data.

- **Integration with student management and human resource systems** – Simplify data management and protect data integrity by integrating systems and storing data securely.
- **Protect Valuable Assets** – Command Centre's integration with student and employee credentials allows you to carefully control access to restricted areas like robotics and research laboratories, swimming pools and sports facilities.
- **Locker Management** – Gallagher's fully integrated Locker Management solution allows you to manage locker access, automate allocation, and ensure the best use of locker resources. Flexible allocation times and a dynamic locker viewer make it easy for students and staff to secure personal items.

Business Efficiency.

- **Simplify Administration** – Simplified administration processes save time and money, while improving staff productivity – freeing them to spend more time with students and create a great campus experience.
- **Cost Savings** – Gallagher's integrated security solutions allow you to manage site security, control building management systems, enforce compliance and increase system efficiency – reducing operational and training costs, energy use, and utility costs.

South Africa's Athlone Campus is home to the Western Cape College of Nursing, a sprawling complex of lecture halls, administration blocks and four hostels that house around 2000 nursing students. Gallagher Command Centre was chosen as the most effective system to manage access to the hostels and keep the students safe.

The nursing college had no method of limiting access to its hostels. People came and went as they liked, there was no record of who was on site and it was difficult to enforce visitor hours.

Theft was a problem and reported cases of sexual assault had become a major concern. Access needed to be more secure.

"The detailed maps that appear onscreen with Gallagher Command Centre clearly indicate the location of alarms and give security staff the ability to respond more quickly to emergencies."

Jason Adams, FS Systems

The Gallagher Solution

Safety and security are essential to providing a healthy living and learning environment for students. Athlone Campus partnered with local security solutions provider, FS Systems, to install access control and video surveillance in its hostels.

Gallagher Command Centre was chosen to manage the access control system, monitoring access points and allowing only authorized students, staff and visitors to enter the hostel buildings.

Biometric fingerprint readers were mounted on full-height turnstiles at each of the hostel entrances and exits to manage general access. Fingerprint readers prevent unauthorized entry from people using lost or loaned cards, and the anti-passback measures built into Command Centre means students can't 'pass in' a visitor or bypass the system, as it recognizes and records that someone has tried to enter twice.

Fast facts

Area of college: 12ha

Number of buildings: 12

Number of doors: 12 turnstiles

Number of cardholders: 5,000

Gallagher's integrated visitor management system now monitors visitors and allows the college to control visiting hours. Visitors to the college hostels must register at reception and have their fingerprint captured by the visitor management system. They are then granted access to only the hostel they are visiting. In the evening the system generates an alarm and reports on visitors still on site – allowing security to ask people to leave, and prevent further visitors from entering.

Jason Adams, Cost and Estimating Manager for FS Systems says, "The general feeling from students and staff is that they are more secure knowing that everyone entering the facility has gone through some sort of screening or registration process at the security office. The presence of physical security barriers (full-height turnstiles) is reassuring, in that not just any person can gain entry without the necessary authorization."

Alongside access control, the college installed a comprehensive video surveillance solution to reduce incidents of violence, vandalism and crime. The entire video management system is seamlessly integrated with Command Centre, creating one easily managed security solution to track student, staff and visitor movements and ensure that when an incident does occur, security staff are quickly informed and able to respond effectively.

"It's essential for the system to be user-friendly and easy to operate and manage," says Jason. "The detailed maps that appear onscreen with Gallagher Command Centre clearly indicate the location of alarms and give security staff the ability to respond more quickly to emergencies."

The results provide more than just security

Using Gallagher Command Centre, the nursing college now has a powerful and versatile security system that meets the unique needs of its site.

The system provides a reliable way to clearly capture data to monitor students, staff and visitors, lower criminal activity and improve onsite safety. In particular, security personnel can easily find the right information for quick incident resolution, which has led to improved processes, procedures and convictions when necessary.

The college has also achieved significant cost savings through the prevention of vandalism and a significant reduction in reported cases of theft. The combination of the new access control system and an increase in physical security barriers means they have also been able to decrease the number of security guards patrolling the facility, reducing overhead costs. Customizing and generating reports for college management is also a straightforward task, saving time and money.

Most importantly, Gallagher's security solution has given Western Cape College of Nursing control of who is on site and when – allowing its students to be safe, secure and focused on learning.



The college has achieved significant cost savings through the prevention of vandalism and a significant reduction in reported cases of theft.





Minimise the risk that fire poses to people & critical assets on Campus

Universities which generally consist of numerous buildings either spread out or concentrated within a campus layout, usually require specialized Fire Protection solutions.

Although areas such as administration buildings can often be served by standard systems, there are many applications that need more sophisticated protection, such as:

- Lecture theatres
- Laboratories
- Libraries and archives
- Kitchens
- Student accommodation
- Plant Rooms



Solutions that are tailored to these areas can not only ensure that incipient fires are detected at the earliest possible time, but also practically eliminate false alarms.

Fire & Life safety solutions are designed to protect the lives of students and staff on campus, as well as a university assets by:

- Providing very early warning of fire
- Minimizing damage caused by fire
- Safely and quickly evacuating people from affected areas

The FS Group protects universities through very early warning smoke detection, smoke and heat detection, fire and gas suppression systems, emergency voice evacuation and emergency lighting technologies.

Integrations are also done into most building management, safety and security systems found in day to day operations, including:

- Public Address or Voice Alarm Systems
- Video Surveillance Systems
- Access Control and Elevator Management Systems
- Electrical, HVAC, Smoke and Mechanical Fire Management Systems



Fire Protection & Emergency Lighting at the Baxter Theatre

Built in 1976, the Baxter Theatre Centre is a vibrant, multicultural entertainment hub in the Southern Suburbs of Cape Town. Nestled under the striking Devil's Peak Mountain and at the foot of the University of Cape Town, the Baxter boasts a world-class theatre and concert hall, as well as a studio stage, rehearsal rooms, offices, a restaurant, bars and an impressive foyer.



Prior to hosting a major international show, the Baxter Theatre needed to upgrade their Fire Protection Systems to meet current SANS standards. With only two months before the show, they needed this to be done in 5 theatres and other spaces, for the show to continue.

The FS Group was approached to handle the project, following the long-standing relationship with the University of Cape Town.

The FS Group understood the challenge. The project needed to be completed within two months, with no disruption to productions or rehearsals. The system also needed to be aesthetically pleasing. A project plan was drawn up, and work was scheduled to take place between 11pm and 6am every evening. A team of 20 worked over the two months to ensure work was done on time.



The first phase of the project was Fire Detection which included replacing wireways, upgrading **13000 meters of cable, installing Fire Panels, 1200 Smoke Detectors and 70 break glass units.**

Part of the fire detection system was to be installed in the backstage areas, which typically have about a 30-meter height clearance. Normal Point Detection would not work in this situation, so Securiton Aspirating Smoke Detection systems were installed in the backstage areas and Fire Curtains were fitted on the stages.



For the public address system, a total of 48 speakers were installed. The Theatre has many big open spaces, so typical speakers could not be installed. Due to the acoustic ceiling in the Foyer, which absorbs sound, the speakers had to be set up accurately to get sound down into the foyer. Cluster based speakers were chosen and suspended about 20 meters up in the air, so that they did not affect the ascetics.

Phase 1 was completed within the 2-month deadline and approved by the Fire Chief, allowing the show to continue.

Phase 2 of the project was to install Emergency Lighting.

Due to the nature of a theatre and because there is no natural light coming in, when you lose your main source of electricity, the theatre is plunged into total darkness. Another challenge was to keep the theatres dark when they needed to be but still to provide sufficient lighting for escape routes.

Firescape Emergency Lighting was installed throughout the theatres, including 321 lights and 8000m of cable.

Not only did this improve the safety of the theatres in case of an emergency but also allowed for better functionality as rehearsals could continue despite of load shedding.



In the past, staff used to manually isolate different systems during showtime and isolating 10 different theatre areas could become quite complex. All theatre areas were now programmed into a Graphics Package, to make managing the system during shows easier and safer, and extensive training was given to Managers.

Now, when a fire alarm triggers in one of the theatres, no audible fire alarms activate, so that no panic is caused. Fire alarms go through to the graphics package at the main control station, and an SMS is sent to every Line Manager on their phones. Once investigated, the fire alarms are cleared and the system returns to normal, so that there is full coverage and protection at all times.



The Baxter Theatre now has a newly upgraded, fully functional Fire Detection, Public Address and Emergency Lighting System.

Summary of Equipment:

- Fire Detection including 2 ZP Fire Panels, 1 Graphics Software Package, 400 Detectors, 4 Securiton Aspirating Systems, 8 Beam Detectors, 67 Combination Strobe Sounders, 26 Break Glass Units and 13000m Ph30 Cable
- Public Address and Evacuation System including PA Rack, 38 Wall Mounts Speakers, 10 HX-5 Speakers and 7000m of Cable
- Refuge Intercoms including 1 Master Station and 11 Substations
- Emergency Lighting including 2 Panels, 321 Lights and 8000m of Cable





Management of access rights to critical infrastructure has significant security challenges for universities and large facilities.

One of the challenges that Facilities Management faces, is the management and tracking of keys when multiple service providers or personnel need access to the same assets.

Now, there will be no need to ever physically enroll or issue keys and cards, no need for onsite servers or software and no expensive network requirements or hardware. Teleporte provides you with unlimited keys and locks, and automatic access to records, all managed through the cloud with bank grade security.

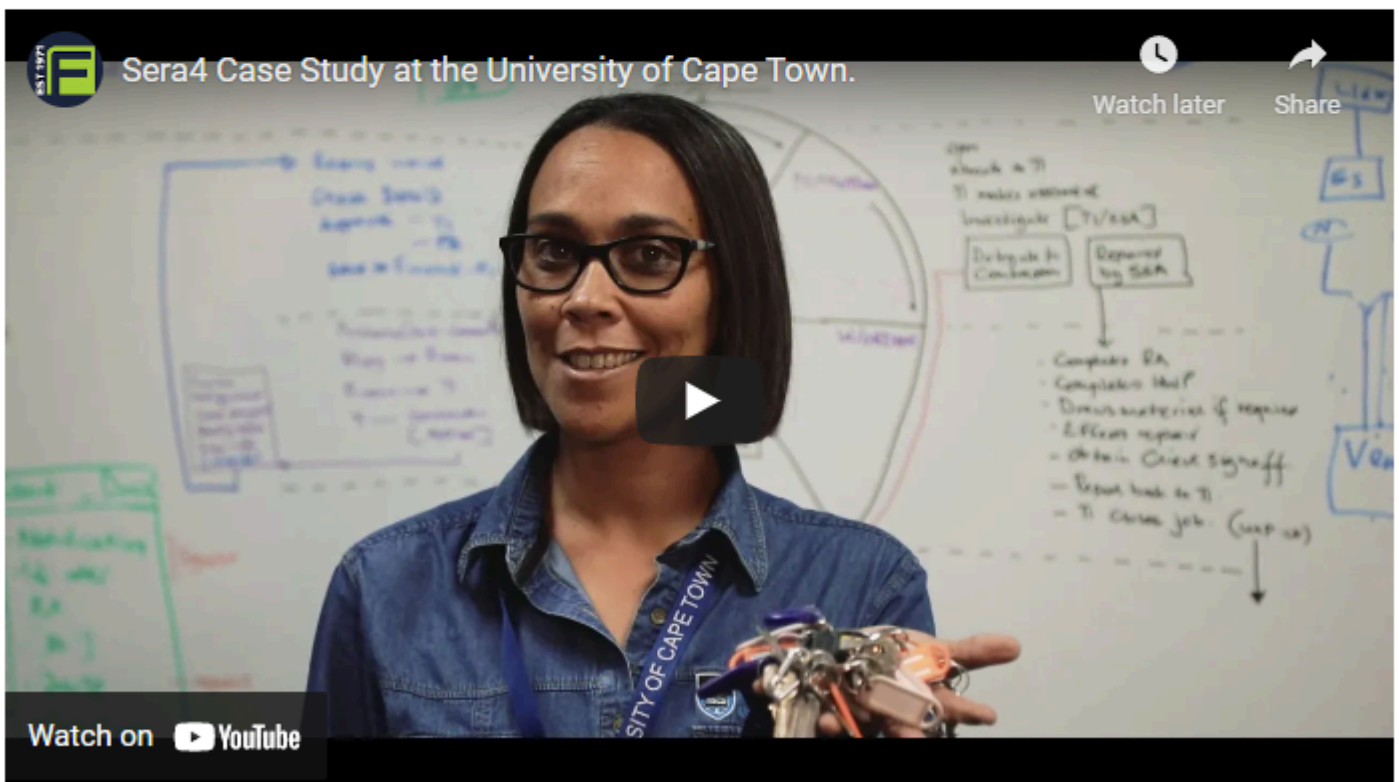
Manage thousands of keys efficiently and in real time from any device connected to the Internet. Sera4 offers a keyless padlock to control perimeter access, which is easy to deploy. It transforms electric locks into keyless locks to control access to shelters and cabinets. The lock controller also integrates with standard electro-mechanical and electro-magnetic locks.

Sera4 Keyless Access Control at the University of Cape Town

The University of Cape Town commenced with a Proof of Concept installation at their Upper Campus, where they are actively using the Sera4 Keyless Padlocks to secure high risk areas, where access is needed to be managed with multiple service providers.

The solution provides centralized management of digital keys through the use of Smartphones to control locks and access points over Bluetooth.

Scan the QR Code below to watch Case Study and to see Sera4 Teleporte in action.



Scan here to watch the video:





Campus buildings are complex and have varying maintenance requirements, and facilities managers need to stay ahead of potential issues before they become more serious.

Smart technologies can help institutions save money and time – by using IoT sensors and data analytics that optimize systems across campus.

Dijital Sensor Monitoring Solution is a cloud-based platform that offers the ability to manage and monitor multiple critical assets across various locations remotely.

Monitor Environmental factors such as temperature and CO₂, and Motion factors such as movement, occupancy and tamper detection.

PLATFORM FEATURES:

- Live Dashboards & Digital Mimic Panels
- Geographical Maps
- Real-Time Notifications via Email, SMS & Mobile Applications
- Multi-Tenant & Multi-User Cloud Infrastructure
- Native Mobile Application

Sigfox IoT devices are used for environmental and equipment condition monitoring sensors. Sigfox offers a software-based communications solution, where all the network and computing complexity is managed in the Cloud, rather than on the devices. All that together, it drastically reduces energy consumption and costs of connected devices.



Illuminating pathways, parking lots, and roads around campus is essential to the safety of students, staff, and visitors.

The Sunna iSSL Range is a reliable and robust stand-alone solar lighting solution, particularly suitable for roads, car parks and big open areas.

Sunna Design is a leader of solar energy management for autonomous and connected applications, with solar street lighting being their core business.

Solar panels are embedded in the solution making them theft proof. An anti-dust and self-cleaning coating protects them against dust accumulation.

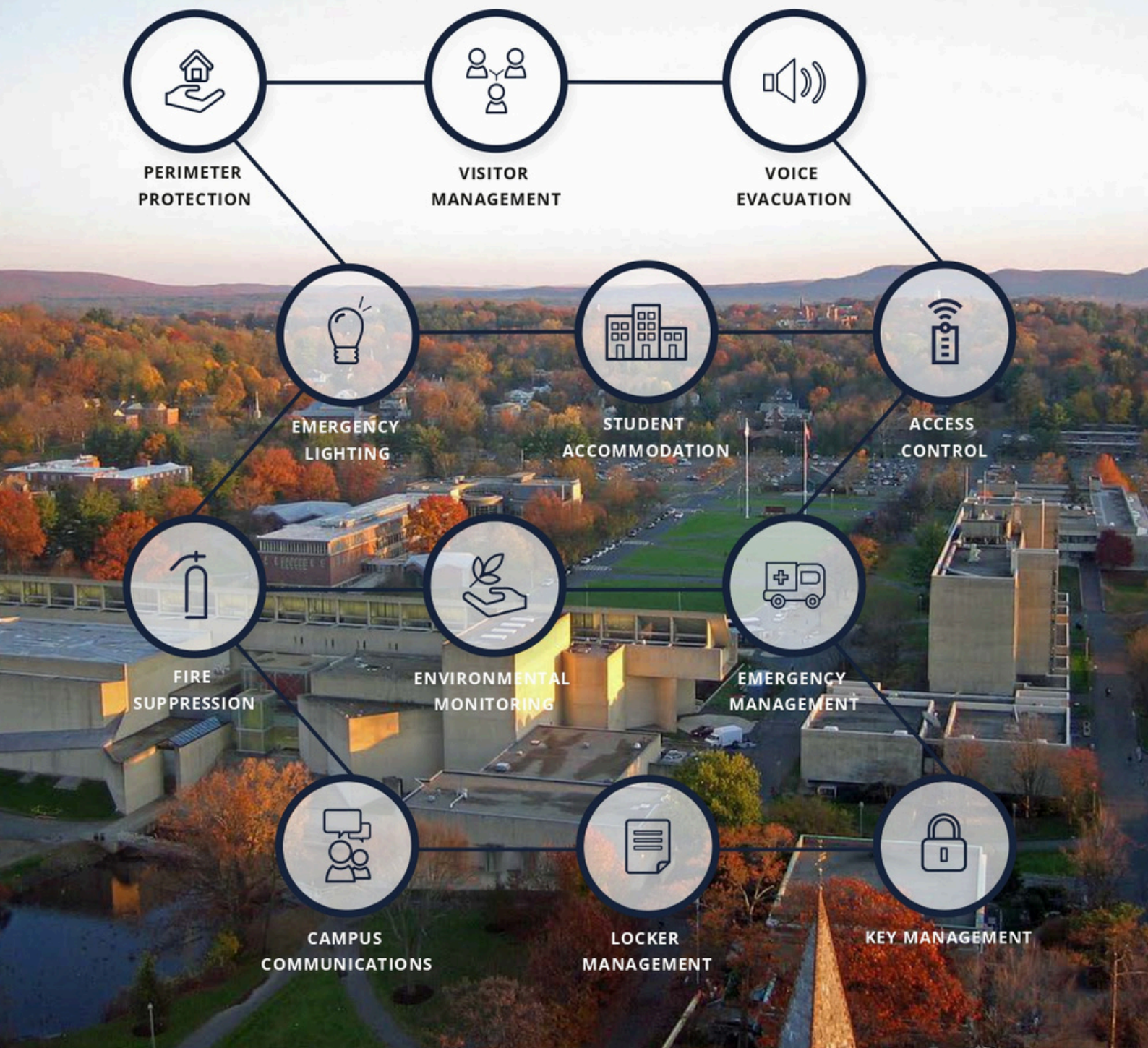
The battery is based on temperature-resistant NiMH technology which, associated with patented cooling system, ensures the products can be deployed in areas with extreme temperatures ranging from -40°C to $+70^{\circ}\text{C}$. NiMH batteries are known to have the longest lifespan in the industry.

Controlled by the SunnaCore within the products, they benefit from a unique charging system that further ensures optimal battery health and robustness.

Some benefits of using the Sunna iSSL range include:

- Plug and play so no need for additional infrastructure to install outdoor lights
- Onsite or remote monitoring via mobile App
- Proven track record – installed in more than 43 countries worldwide
- Resistant to extreme temperatures, perfect for the African environment
- 10+ year lifespan





Integrated Technology

The technical infrastructure of a university consists of a multiplicity of subsystems from various disciplines such as Fire, Security, Video Surveillance, Access Control and Building Management Systems. The main purpose of the safety and security systems is to trigger the appropriate warning signals when any potential emergency situation has been detected. By integrating these normally separate systems, management can be done more efficiently and action taken quicker.

Provide immediate assistance in case of emergencies on Campus.

Large university campuses with high footfall are prone to security vulnerabilities due to multiple access points for vehicles and pedestrians, posing a challenge in ensuring the safety of students and faculty.

The FS Group provides a custom-designed **Emergency Bollard solution** that enables immediate notification of incidents to Protection Services and draws attention to the scene, improving response time and increasing the chances of getting help.

By pressing the intercom, students and personnel can alert the Control Room and activate a visual indicator through the LED turning red, allowing real-time communication with the victim through the two-way speaker and quick situation assessment.

The solution provides immediate assistance in criminal or medical emergencies, enabling first responders to respond in real-time and potentially making a critical difference in ensuring campus safety.





Integrated security technology solutions can optimise the use of Lecture Theatres and Exam Centres, while simultaneously enhancing students and staff's experience on Campus.

Challenges currently faced with Lecture Theatres and Exam Centres include venue optimisation, invigilation, student authentication and access to podiums.

An integrated security technology solution can tackle these challenges:

Implement **Venue Optimisation** to ensure that venues are appropriately booked and unnecessary costs avoided. Book venues based on the number of students attending a lecture thus ensuring that venues are not over or underutilised. When booking a venue for a lecture or exam, our solution will notify the end user of appropriately sized venues that are available to avoid small groups from booking a large venue and vice versa.

A smart work environment means increased productivity, more staff collaboration and better use of existing facilities.

- Automatically manage room and resource use, ensuring they are used to their full potential.
- Reduce ongoing costs of heating, ventilation, air-conditioning, and lighting.
- Identify opportunities to rent out facilities by the hour, creating additional cash flow.
- Create better use of space, improving communication between teams and enabling the work environment to be up to 20 percent smaller.

People Counting ensures that only a specified number of occupants can enter a venue within the scheduled parameters.

If a venue has been booked for 50 students and a lecturer, the end user is notified as soon as this number is exceeded. Furthermore, a dashboard displays the number of occupants in a venue at any given time and notifies the end user when there are too few occupants in a venue, which is ideal for exams. The end user has access to a reporting tool to easily identify which student(s) are scheduled for an exam but are not present.

Edge Analytics is used for Remote Invigilation and Security. Analytics include classified object detection (people), violation of social distancing rules, and facial recognition.

Cameras detect people entering, leaving, or loitering in venues. When a person enters a venue that is not booked, an alert is sent to the Video Management System. A Fisheye camera provides an overview during exams and Edge Analytics detects unusual activity in a venue autonomously.

These advanced AI capabilities help provide detailed information on what is happening in the venues, so you can detect potentially critical security events faster, and take responsive action.

Arm and Disarm Venues automatically to ensure that all unoccupied venues are armed and theft reduced.

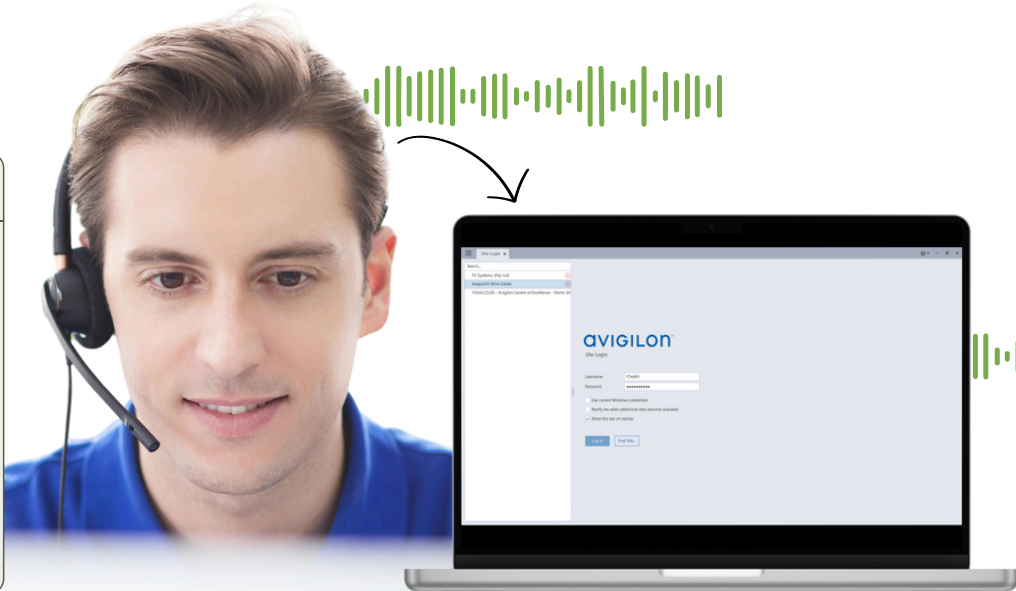
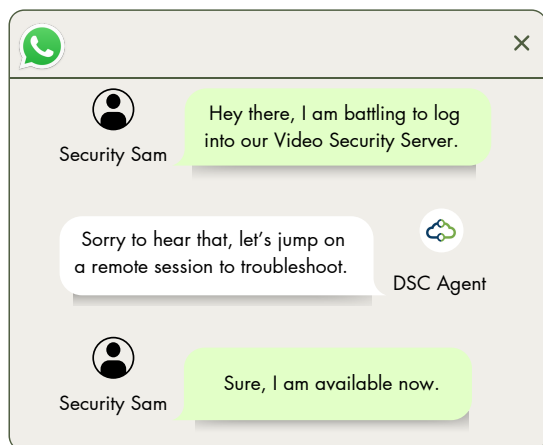
When the last occupant leaves a venue, PIR's and Magnetic Contacts automatically arm. When the first authorised person enters the venue, the security system will automatically disarm. In the event of an alarm violation, an alert is sent and the Control Room Operator will have immediate access to the relevant information via the Video Management System.

Cloud Based Access Control is used for **Podium Security** to remove the use of manual keys. Access to Podiums is granted to authorised users who will only be able to access the podiums at scheduled times.

When booking venues, access rights will be granted to lecturers for the duration of the lecture. Once the time expires, the podium will no longer be accessible thus encouraging lecturers to vacate the venue within the allocated time.

Smart Environmental Monitoring integrated with the Video Management System enables end users to be notified if the air quality degrades or when an occupant vapes in the venue. The sensor will alert the system and the relevant footage will display on the VMS.

This sensor can help with Vape and THC Detection, Air Quality Monitoring, Aggression Detection and Calls for Help, Gunshot Detection, Chemical and Gas Detection, and Vandalism and Trespassing Alerts.



Introducing our Dijital Support Centre

Our cutting-edge Dijital Support Centre is where technology meets unparalleled assistance to ensure a seamless digital experience.

Our comprehensive suite of solutions is designed to improve your technological security landscape, offering a spectrum of services including:

Virtual Technical Support – No need to call us out – our skilled technical experts are now ready to address your technical queries and challenges remotely.

Proactive Device Monitoring – A proactive approach to monitoring critical events, enabling us to resolve issues before they impact your business, ensuring uninterrupted operations. Tickets are automatically created for defined events.

Preventative Maintenance – If systems are allowed to expand without proper oversight, they may pose a risk over time. In the best-case scenario, they consume valuable storage space, and in the worst case, they could pose a physical security threat. We apply advanced methodologies to enhance the longevity and efficiency of your systems through preventative maintenance tasks.

System Optimization – We ensure that your security software remains up-to-date with the latest compatible versions, complete timely implementation of critical software updates, maintain system compliance, and effectively mitigate risks.

Remote Commissioning – Reduce lead times and the cost of on-site commissioning of your security systems. We can help improve productivity in software commissioning tasks.

Integration Support & Software Development – Offering bespoke software development and integration support for security technologies.

Operator Training – Training to end users on how to navigate and use the security software. Performing basic functions such as capturing of cardholder details, enrolment of biometrics and credentials, generating access reports and more.

Mobile Device Management – Centrally deploy, configure, and manage mobile devices (Android and iOS), ensuring compliance, enforcing security policies, simplifying onboarding and ensure devices only use authorized applications.

Enjoy custom **Monthly Reporting** on the performance of your monitored devices and security systems, as well as bespoke **Knowledge Portals** for your business.

WE PROTECT LIVES AND ASSETS ON CAMPUS, THROUGH TECHNOLOGY



CAPE TOWN HEAD OFFICE

Address: Ground Floor, Birkdale 1,
River Park, Gloucester Road,
Mowbray, 7700, Cape Town, ZA
Tel: +27 (0) 21 685 1111



JOHANNESBURG BRANCH OFFICE

Address: Unit A01C, Stoneridge Office Park
8 Greenstone Place, Greenstone
Johannesburg, 1609, ZA
Tel: +27 (0) 87 828 0428